

CABINET SELECTION GUIDE

YORKTOWNE™
CABINETS
AN ELKAY COMPANY

A century of craftsmanship. A lifetime of quality.





Charlton Maple, Linen Finish with Ebony Glaze and Onyx Finish

USING OUR EXPERIENCE TO ENHANCE YOURS

For nearly a century, Yorktowne has been crafting classically beautiful cabinetry for America's kitchens, baths, home offices and entertainment centers. From the beginning, we have used every opportunity to build our knowledge and improve each stage of your building or remodeling experience.

Of all the stages, none is quite as exciting as this initial design phase. Your new room is a blank canvas, and here is where you begin to imagine the masterpiece we will create together. All the elements are right here in this guide. Our experience has led to a complete product line that includes solutions for any room design — everything from spice drawers to wine racks to decorative corbels and glass door inserts.

Simply page through the basic categories and mark the components that appeal to you for your new room, whether it's practical storage solutions or unique finishing touches. Jot down ideas for how you want specific areas to function as well as the overall look you are trying to achieve. Then share all these ideas with your designer, who will help you put together the perfect plan for you.

Contents

FIND YOUR DESTINATION



Cove Crown Molding
with Stainless Steel Insert (p 19)



Base Pantry Pull-Out Cabinet (p 13)

Universal Access Cabinetry

Yorktowne Cabinetry is proud to offer Universal Access cabinetry for the physically challenged. Select wood door styles and cabinet sizes are available. Please ask your designer for details and availability.

Storage Solutions	4-5
Finishing Touches	6-7
Wall Cabinets	8-9
Standard	8
Corner	8
Island	8
Specialty	8-9
Wood Hoods	10
Base Cabinets	11-13
Standard	11
Corner	12
Sink	12
Island	12
Specialty	13
Home Office Cabinetry	14
Islands	14
Tall Cabinets	15
Utility	15
Pantry	15
Oven	15
Vanity Cabinets	15-16
Base	15-16
Tall	16
Wall	16
Medicine Cabinets	16
Light Bars	16
Furniture Components	16
Library Systems	16
Pocket Door Cabinets	16
Wall Systems	16
Décor Creations™ Decorative Accents	16-18
Door Creations™ Door Frame Inserts	19
Moldings and Accessories	19-21
Moldings	19-21
Valances	19
Kits & Components	20-21
Fillers & Panels	22
Deluxe End Panels	22
Appliance Panels	22
Modifications and Customized Cabinetry	23
Door Styles	24-25

Storage Solutions

MAKE THE MOST OF YOUR SPACE

The size of your room isn't nearly as important as its efficiency.

Yorktowne has developed dozens of clever solutions to make sure you have a place for everything and no wasted space. Tuck your bread box and cutting board in a base cabinet. Install tilt-out trays by the sink for sponges and such. Organize your baking sheets in that sliver of space beside the stove. If it belongs in your room, we'll make a place for it. Just mark the solutions you like and share them with your designer.



Spice Drawer Insert (p 21)



Wine Rack Shelf (p 9)



Serenity Cherry, Toffee Finish



Base Microwave Oven Cabinet (p 11)



Maple Bread Box Drawer Base Cabinet (p 13)



Base Filler Pull-Out Cabinet (p 13)



Two Drawer and Tray Base Cabinet (p 11)



Sink Base Cabinet with optional Tilt-Out Trays (p 12)



Base Cabinet with Adjustable Tray Kit (p 11)



Base Pantry Cabinet (p 13)



Rattan Basket Base Cabinet (p 13)



Trash Recycling Base Cabinet (p 13)



Spice Rack Wall Cabinet (p 9)



Deep Drawer Organizer (p 21)

Finishing Touches

MAKE IT UNIQUELY YOURS

Creating your new room is about more than convenience and practicality.

It's about beauty and personal expression. Yorktowne has a full selection of finishing touches that make your room unlike any other.

First, there are the finishes themselves. Rich, pure colors that allow the natural character of the wood below to shine through. Hand-rubbed glazes, opaque designer finishes and hand-crafted character finishes allow you to create combinations that will set the perfect mood for your home.

You can also choose from a stunning variety of decorative accents. Beautiful moldings can be used individually or combined for dramatic effects. Corbels, rosette blocks and fluted fillers add originality. Many of our cabinets can even be specially modified to fit the unique requirements of your room. From simple and spare to elegantly embellished, Yorktowne can create a room that reflects your individual style.



Asbury Cherry, Impressions Spruce and Eggshell Finishes.
Wood Hood (p 10), Leaves Block Onlays, Applique & Corbels (p 18), Column Box (p 22)



Gourmet Wood Hood (p 10)



Wide Crown and Triple Bead Molding.
Wide Valance, Split Post Molding Beaded
and Split Post Molding Capital (p 18-20)



Baseboard Molding (p 20)



Basket Weave Corbel (p 18)



Door Frames with Toffee Leaves Inserts (p 19)



Basket Weave, Triple Bead and Cove Crown Molding (p 18-20)



Reversible Leg (p 17)



Island Base End (p 14)



Deluxe Arched Mantle (p 10)



Decorative Light Shield (p 20)



Mullion Doors with Seeded Glass Inserts (p 19)



24" Leaves Corbel (p 18)

Cabinet Selections

This section will introduce you to an extensive assortment of Yorktowne cabinets, accessories and decorative accents. Not all cabinet configurations are illustrated or available in all lines.

Wall Cabinets

Cabinet Nomenclature

W1530

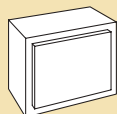
Cabinet Type Cabinet Width Cabinet Height

Note:

- 12", 15", and 18" high cabinets receive no shelves.
- 21" and 24" high cabinets include 1 adjustable shelf.
- 30" and 36" high cabinets include 2 adjustable shelves.
- 42" high cabinets include 3 adjustable shelves.
- For single door cabinets, specify right or left hinge.
- Butt doors noted with the letter "B" suffix have no center stile.
- Sizes shown in inches.

Wall cabinets are 12" deep (excluding doors) except where noted.

STANDARD WALL CABINETS



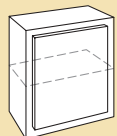
SINGLE DOOR (W)

Width: 12, 15, 18, 21
Height: 12

Width: 12, 15, 18, 21, 24
Height: 15

Width: 12, 15, 18, 21, 24
Height: 18

Width: 12, 15, 18, 21, 24
Height: 21

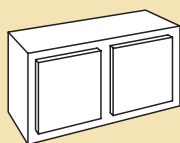


Width: 12, 15, 18, 21, 24
Height: 24

Width: 9, 12, 15, 18, 21, 24
Height: 27

Width: 9, 12, 15, 18, 21, 24
Height: 30, 42

Width: 9, 12, 15, 18, 21
Height: 36



DOUBLE DOOR (W)

Width: 24B, 30, 30B, 33, 33B, 36, 36B, 39, 42, 45
Height: 12

Width: 24B, 30, 30B, 33, 33B, 36, 36B, 39, 45
Height: 15, 21

Width: 24B, 27B, 30, 30B, 33, 33B, 36, 36B, 39, 42, 45, 48
Height: 18, 30

Width: 24B, 30, 30B, 33, 33B, 36, 36B, 39, 42, 45, 48
Height: 24

Width: 24B, 27B, 30, 30B, 33, 33B, 36, 36B, 39, 42, 45, 48, 48B
Height: 27

Width: 24B, 27B, 30, 30B, 33, 33B, 36, 36B
Height: 36, 42

Depth: 12

Width: 30, 30B, 33, 33B, 36
Height: 15

Width: 24B, 27B, 30B, 33B, 36B, 39, 42
Height: 18

Width: 30, 30B, 33, 33B, 36, 36B, 39
Height: 21

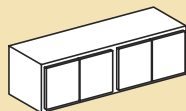
Width: 33, 33B, 36, 36B, 39
Height: 24

Depth: 24

Width: 27B, 30, 30B, 33, 33B, 36, 36B, 39, 42, 48, 48B
Height: 27

Depth: 24

STANDARD WALL CABINETS



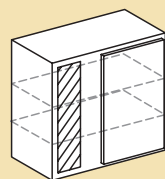
FOUR DOOR (W)

Width: 48
Height: 12

Width: 48B
Height: 18, 24, 30
Depth: 12

Width: 48B
Height: 12, 18
Depth: 24

BLIND CORNER WALL CABINETS



BLIND CORNER (BW)

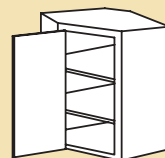
Width: 27
Height: 24, 27

Width: 24, 27, 30, 36, 42B, 48B
Height: 30

Width: 27, 30, 36
Height: 36

Width: 27, 36
Height: 42

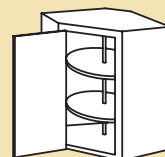
CORNER WALL CABINETS



CORNER WALL (CW)

Width: 24, 27
Height: 27, 30, 36, 42

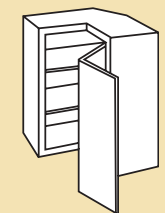
24" cabinet has 12" deep ends.
27" cabinet has 15" deep ends.



REVOLVING CORNER WALL (RCW, SSW)

Width: 24, 27
Height: 24, 27, 30, 36, 42

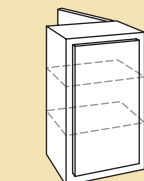
24" cabinet has 12" deep ends.
27" cabinet has 15" deep ends.



EASY ACCESS CORNER WALL (ECW)

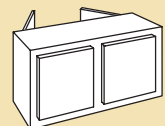
Width: 24
Height: 27, 30, 36, 42

ISLAND WALL CABINETS



SINGLE DOOR (IW)

Width: 18, 21, 24
Height: 30

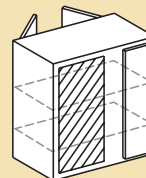


DOUBLE DOOR (IW)

Width: 30, 30B, 36, 36B
Height: 18

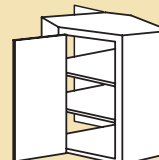
Width: 24, 30, 30B, 36, 36B, 42
Height: 30

ISLAND WALL CABINETS



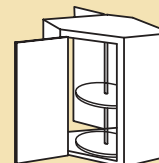
BLIND CORNER WALL (IBW)

Width: 27B
Height: 30, 36, 42



CORNER WALL (ICW)

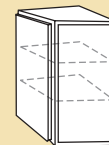
Width: 24, 24B
Height: 30, 36, 42



REVOLVING CORNER WALL (IRCW, SSIW)

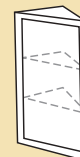
Width: 24, 24B
Height: 30, 36, 42

SPECIALTY WALL CABINETS



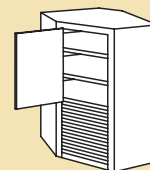
WALL END (WEC)

Width: 12
Height: 30, 36, 42



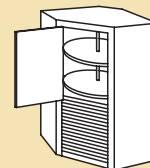
WALL ANGLE (WAC)

Width: 12
Height: 30, 36, 42



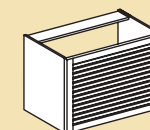
CORNER WALL TAMBOUR (CWT)

Width: 24
Height: 48



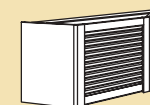
REVOLVING CORNER WALL TAMBOUR (RCWT, SSWT)

Width: 24
Height: 48



TAMBOUR APPLIANCE (TAM)

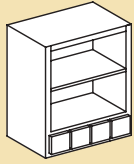
Width: 24, 30
Height: 18



CORNER TAMBOUR APPLIANCE (CTAM)

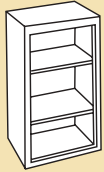
Width: 24, 27
Height: 18

SPECIALTY WALL CABINETS



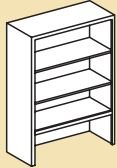
OPEN SHELF (OSC)

Width: 18 (3 drawers)
 Width: 24 (4 drawers)
 Width: 30 (5 drawers)
 Height: 30, 36, 42



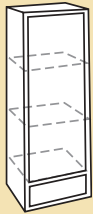
OPEN WALL (OW)

Width: 18, 24, 30, 36
 Height: 30, 36, 42



WALL BOOKCASE (WBC)

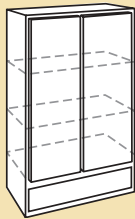
Width: 18, 24, 30, 36
 Height: 48 (2 shelves)
 Height: 54 (3 shelves)
 Height: 60 (4 shelves)



CHINA WITH SOLID DOOR / 1 DRAWER (CC)

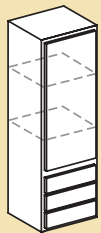
Width: 18
 Height: 48, 54, 60

Available with glass doors.



Width: 24B, 30B
 Height: 48, 54, 60

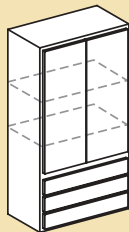
Available with glass doors.



CHINA WITH SOLID DOOR 3 DRAWERS (CC_3)

Width: 18
 Height: 48, 54, 60

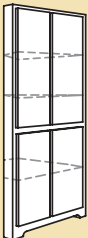
Available with glass doors.



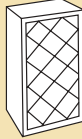
Width: 24B, 30B
 Height: 48, 54, 60

CORNER CHINA (CCC)

Width: 24 x 24
 Height: 70

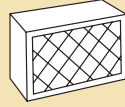


SPECIALTY WALL CABINETS

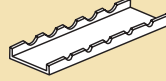


LATTICE WINE RACK (LWR)

Width: 18
 Height: 30, 36, 42



Width: 30, 36, 42
 Height: 18



WINE RACK SHELF (WRT)

Length: 36
 Height: 3
 Depth: 9



PERIOD OPEN SHELF (PCOSC)

Width: 18 (3 drawers)
 Width: 24 (4 drawers)
 Width: 30 (5 drawers)
 Height: 30



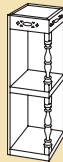
PERIOD PLATE RACK WITH SHELF (PCPRW)

Width: 24 (10 plates)
 Width: 30 (13 plates)
 Height: 30



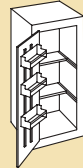
PERIOD PLATE RACK (PCPRW)

Width: 30 (13 plates)
 Width: 36 (16 plates)
 Height: 15



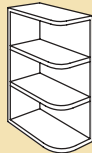
PERIOD WALL END (PCWE)

Width: 12
 Height: 30



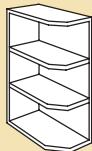
SPICE RACK WALL (SRW)

Width: 15, 18
 Height: 30, 36, 42



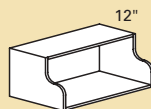
WHATNOT SHELVES (WN)
 Round corners

Width: 6
 Height: 30, 36, 42



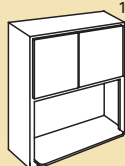
WHATNOT SHELVES (WND)
 Clipped corners

Width: 6
 Height: 30, 36 (4 shelves)
 Height: 42 (5 shelves)



MICROWAVE OVEN SHELF (MICS)

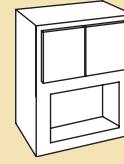
Width: 24, 27, 30
 Height: 18
 Depth: 18



MICROWAVE / T.V. (MTVC)

Width: 24, 27, 30
 Height: 36B, 42B, 48B
 Depth: 18

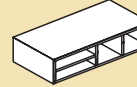
SPECIALTY WALL CABINETS



MICROWAVE OVEN (WMIC)

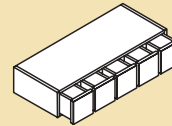
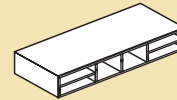
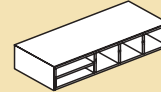
Width: 27
 Height: 36, 42
 Depth: 18, 21

Width: 30
 Height: 36, 42
 Depth: 18, 21



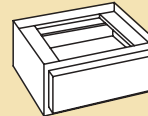
DESK ORGANIZERS (DO)

Width: 24, 30, 36
 Height: 6



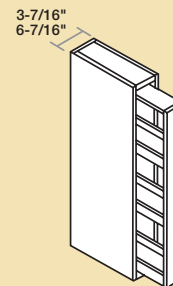
WALL SPICE DRAWER (WSD)

Width: 18 (3 drawers)
 Width: 24 (4 drawers)
 Width: 30 (5 drawers)
 Width: 36 (6 drawers)
 Width: 42 (7 drawers)
 Height: 6



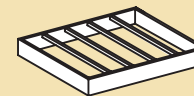
FURNITURE DRAWER (FDC)

Width: 15, 18, 24, 30
 Height: 6



WALL FILLER PULL-OUT (PWF)

Width: 3, 6
 Height: 30, 36, 42
 Depth: 1 1/4



HANGING POT & PAN RACK (HPR)

Width: 30, 36, 42
 Depth: 24
 Height: 4 3/4

Wood Hoods

Create a customized wood hood by selecting from three groups of components available in a variety of styles. Mix and match the individual elements to impact both the look and functionality of your kitchen.

Top Chimney Component (Optional)

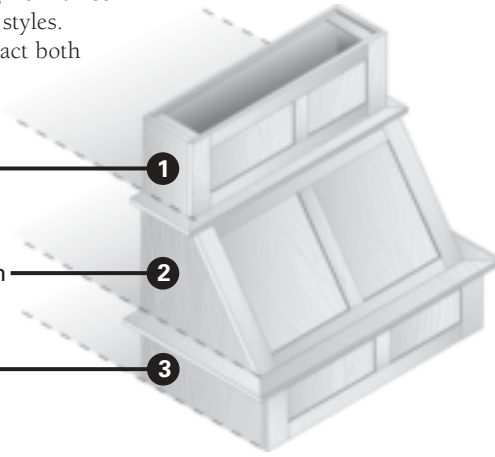
Example: **RHC** - Range Hood **C**himney

Transition Component

Example: **RHT** - Range Hood **T**ransition

Mantel Component

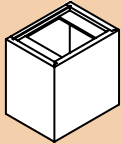
Example: **RHM** - Range Hood **M**antel



Note:

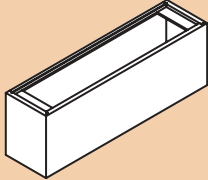
- For depth and width dimensions, be sure to consult with your designer.
- Sizes shown in inches.

TOP CHIMNEY COMPONENTS



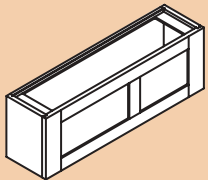
PLAIN DESIGN (RHC_A-)

Width: 36, 42
Depth: 9
Width: 36, 42, 48, 54
Depth: 12
Height: 12



PLAIN DESIGN (RHC_B-)

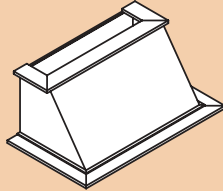
Width: 30, 36, 42
Depth: 9, 21
Width: 30, 36, 42, 48, 54
Depth: 12, 24
Height: 12



DELUXE FLAT DESIGN (RHC_C-)

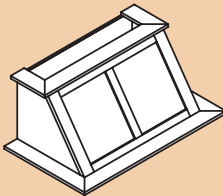
Width: 30, 36, 42
Depth: 9, 21
Width: 30, 36, 42, 48, 54
Depth: 12, 24
Height: 12

TRANSITION COMPONENTS



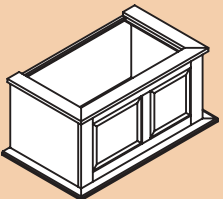
PLAIN ANGLED DESIGN (RHT_B-)

Width: 30, 36, 42
Depth: 21
Width: 30, 36, 42, 48, 54
Depth: 24
Height: 19 1/4



DELUXE ANGLED DESIGN (RHT_C-)

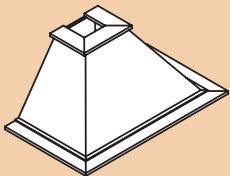
Width: 30, 36, 42
Depth: 21
Width: 30, 36, 42, 48, 54
Depth: 24
Height: 19 1/4



DELUXE FLAT DESIGN (RHT_D-)

Width: 30, 36, 42
Depth: 21
Width: 30, 36, 42, 48, 54
Depth: 24
Height: 19 1/4

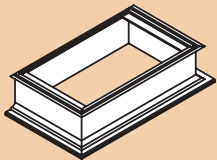
TRANSITION COMPONENTS



PLAIN TAPERED DESIGN (RHT_A-)

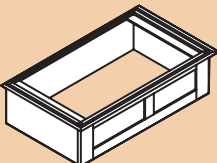
Width: 36, 42
Depth: 21
Width: 36, 42, 48, 54
Depth: 24
Height: 19 1/4

MANTEL COMPONENTS



PLAIN MANTEL (RHM_A-)

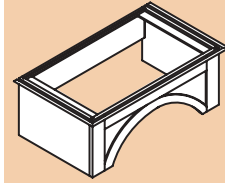
Width: 30, 36, 42
Depth: 21
Width: 30, 36, 42, 48, 54
Depth: 24
Height: 10 3/4



DELUXE FLAT MANTEL (RHM_B-)

Width: 30, 36, 42
Depth: 21
Width: 30, 36, 42, 48, 54
Depth: 24
Height: 10

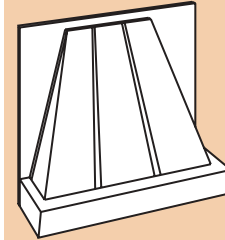
MANTEL COMPONENTS



DELUXE ARCHED MANTEL (RHM_C-)

Width: 36, 42
Depth: 21
Width: 36, 42, 48, 54
Depth: 24
Height: 14 1/4

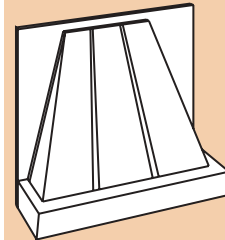
DECORATIVE RANGE HOOD



Range ventilators and liners must be ordered separately.

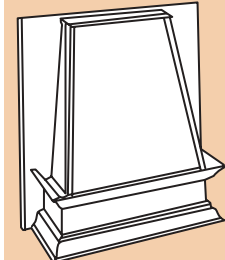
Width: 30, 36
Height: 24
Depth: 9 1/8

RH3024 liner: RHL3021-350
RH3624 liner: RHL3621-350



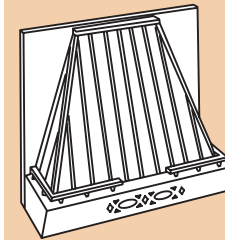
Width: 30
Height: 30
Depth: 9 1/8

RH3030 liner: RHL3021-350



Width: 36
Height: 36
Depth: 9 3/16

RH3636 liner: RHL3021-350



Width: 30, 36
Height: 24
Depth: 9 1/8

PCRH3024 liner: RHL3021-350

PCRH3624 liner: RHL3621-350

Range ventilators and liners are available to meet your ventilation needs.

For more details, consult with your designer.

Base Cabinets

Available in square door styles only.

Cabinet Nomenclature

B30FHB

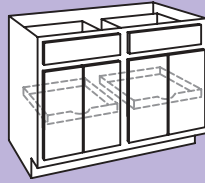
Cabinet Type **Cabinet Width** **Full-height door** **Butt doors, no center stile**

Note:

- For single door cabinets, specify right or left hinge.
- Sizes shown in inches.

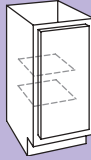
Base cabinets are 24" deep (excluding doors) and 34½" high except where noted.

STANDARD BASE CABINETS



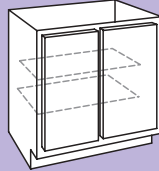
BASE WITH TRAY (BT) cont.

Width: 48

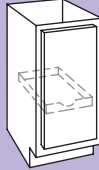


BASE WITH FULL-HEIGHT DOOR AND SHELF (B_FH)

Width: 12, 15, 18, 21

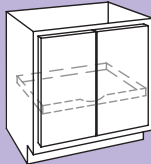


Width: 24B, 30B, 36, 36B, 42, 45

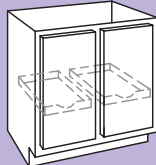


BASE WITH FULL-HEIGHT DOOR AND TRAY (BT_FH)

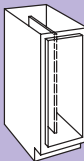
Width: 12, 15, 18, 21



Width: 24B, 30B, 36B

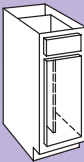


Width: 36, 42, 45



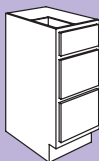
BASE FULL-HEIGHT WITH TRAY DIVIDER (BTD_FH)

Width: 9



BASE WITH TRAY DIVIDER (BTD)

Width: 9, 12, 15



DRAWER BASE (DB_3)

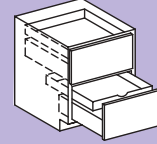
Width: 12, 15, 18, 21, 24

STANDARD BASE CABINETS



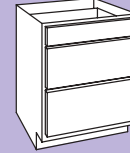
DRAWER BASE (DB_4)

Width: 12, 15, 18, 21, 24



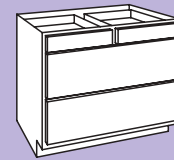
TWO DRAWER/TRAY BASE (DBT)

Width: 15, 18, 21, 24, 27, 30

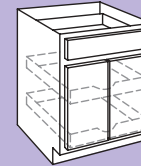


DRAWER COOKTOP BASE (DCTB)

Width: 24, 27, 30, 33

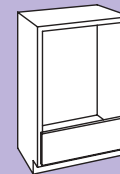


Width: 36



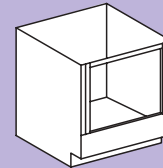
COOKTOP BASE (CTB)

Width: 30B, 36B



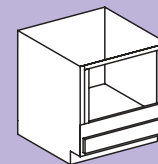
BASE DISHWASHER (BDW)

Width: 27



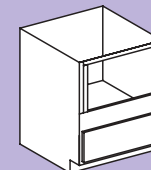
BASE OVEN (BOC)

Width: 30, 33, 36



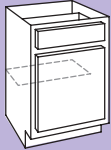
BASE MICROWAVE OVEN (BMW)

Width: 27, 30, 33



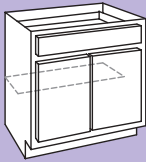
Width: 27, 30, 33
Height: 40 1/2

STANDARD BASE CABINETS

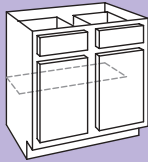


BASE WITH SHELF (B)

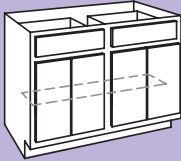
Width: 12, 15, 18, 21, 24



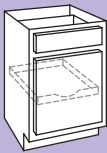
Width: 24B, 27B, 30, 30B, 33B, 36B



Width: 33, 36, 39, 42, 45, 48

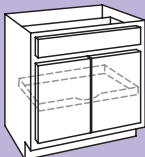


Width: 48B

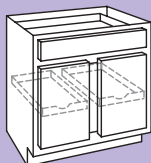


BASE WITH TRAY (BT)

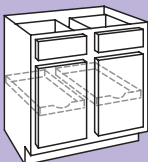
Width: 12, 15, 18, 21, 24



Width: 24B, 27B, 30B, 33B, 36B

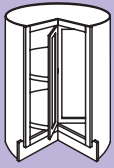


Width: 30



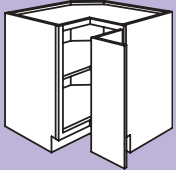
Width: 33, 36, 39, 42, 45, 48

CORNER BASE CABINETS



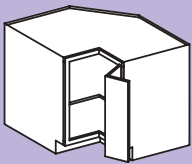
BASE LAZY SUSAN (BLS)

Width: 36



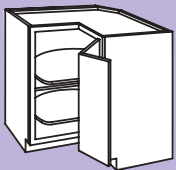
EASY ACCESS CORNER BASE (ECB)

Width: 33, 36



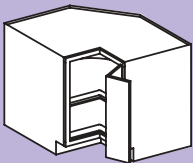
ASYMMETRICAL EASY REACH CORNER BASE (AECB)

AECB3336
AECB3633



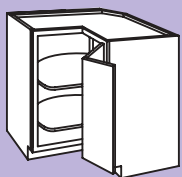
SUPER SUSAN CORNER BASE (SSCB)

SSCB36
2 wood revolving trays.



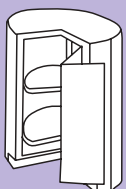
ASYMMETRICAL SUPER SUSAN CORNER BASE (ASSCB)

ASSCB3336
ASSCB3633
2 wood revolving trays.



REVOLVING CORNER BASE (RECB)

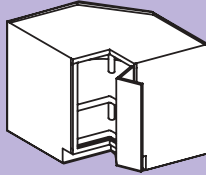
Width: 33, 36
2 revolving trays.



REVOLVING CORNER BASE (RCB_FH)

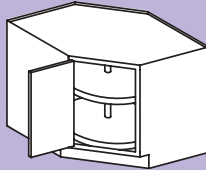
Width: 36
2 revolving trays.

CORNER BASE CABINETS



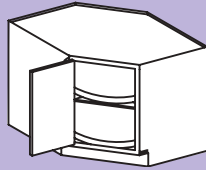
ASYMMETRICAL REVOLVING CORNER BASE (ARECB)

ARECB3336
ARECB3633



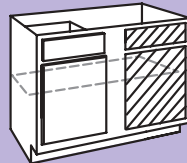
DIAGONAL REVOLVING CORNER BASE (DRECB)

Width: 36
2 wood revolving trays.



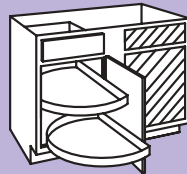
DIAGONAL SUPER SUSAN CORNER BASE (DSSCB)

Width: 36
2 wood revolving trays.



BLIND CORNER BASE (BCB)

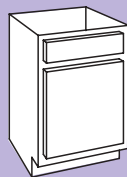
BCB35-39
BCB38-42
BCB41-45
BCB45-49
BCB48-51



BLIND CORNER BASE SWING-OUT (BCB_SO)

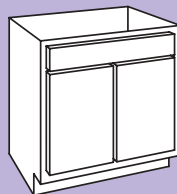
BCB48-51SO

SINK BASE CABINETS

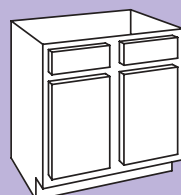


SINK BASE (SB)

Width: 12, 15, 18, 21, 24

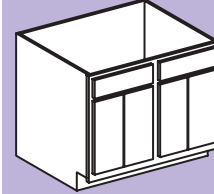


Width: 24B, 27B, 30, 30B, 33B, 36B

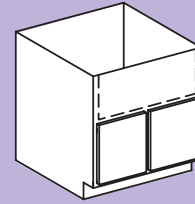


Width: 33, 36, 39, 42, 45, 48

SINK BASE CABINETS

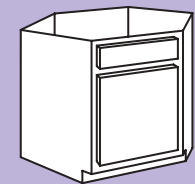


Width: 48B



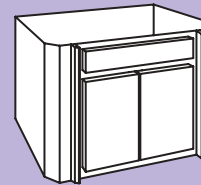
APRON SINK BASE (SBA)

Width: 30, 30B, 33, 33B, 36, 36B
For cut-out specifications, consult with your Designer.



DIAGONAL SINK BASE (DSB)

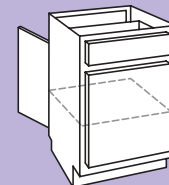
Width: 36, 42 (1 door)
Width: 42B (2 doors)
Depth: 28



DIAGONAL CORNER SINK BASE (DCSB)

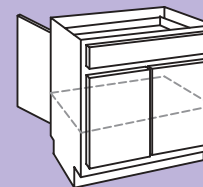
Width: 42B

ISLAND BASE CABINETS

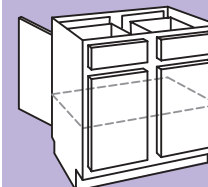


ISLAND BASE (IB)

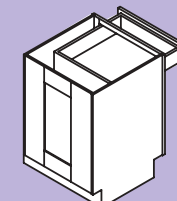
Width: 18, 24



Width: 24B, 30, 30B, 36B



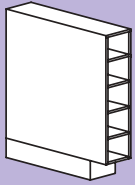
Width: 36, 42



COMBINATION CORNER ISLAND BASE (CCIB)

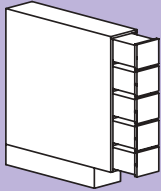
Width: 24, 24B

SPECIALTY BASE CABINETS



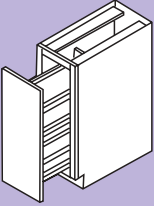
BASE SHELF ORGANIZER (BSO)

Width: 6
No drawers.



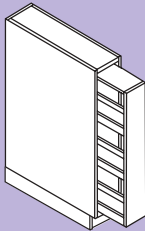
BASE SPICE DRAWER (BSD)

Width: 6



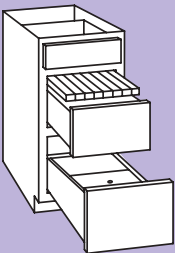
BASE PANTRY PULL-OUT (BPP)

Width: 9, 12



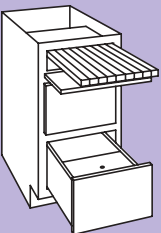
BASE FILLER PULL-OUT (PBF)

Width: 3 7/16, 6 7/16



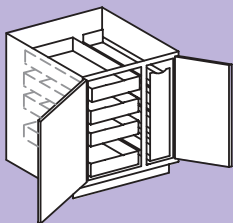
BREAD BOX DRAWER BASE (BDB)

Width: 15, 18
Metal bread box in lower drawer.



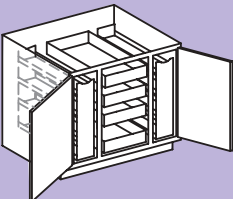
MAPLE BREAD BOX DRAWER BASE (MBDB)

Width: 18
Metal bread box in lower drawer.



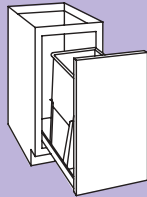
BASE PANTRY (BP_FHB)

Width: 30



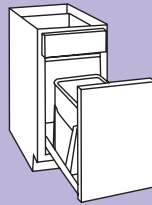
Width: 36

SPECIALTY BASE CABINETS



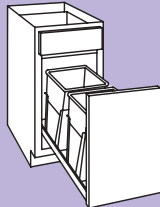
TRASH RECYCLING BASE (TRB_FH)

Width: 15
1 - 50 quart basket.



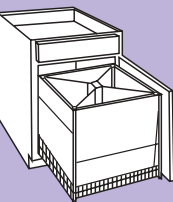
(TRB)
Width: 15

1 - 36 quart basket.



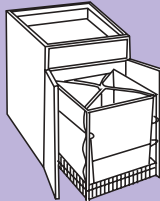
(TRB)
Width: 15

2 - 27 quart baskets.



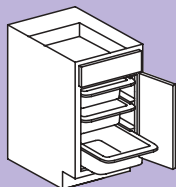
(THB_B)
Width: 24

1 door.



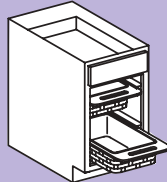
(THB_B)
Width: 24

3 - 25 quart plastic trash containers.
1 - 18 quart canvas bag.



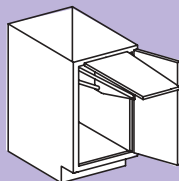
TOTOTRAY BASE (TTB)

Width: 18
Removable pull-out fiberglass tote trays.



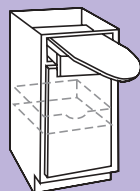
RATTAN BASKET BASE (RBB)

Width: 18
2 deep rattan baskets, natural finish.



MIXER BASE (BMX_FH)

Width: 18, 24



IRONING BOARD BASE (BIB)

Width: 18

SPECIALTY BASE CABINETS



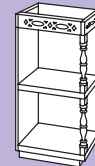
PERIOD OPEN BASE (PCB)

Width: 30
1 top drawer.
Width: 36
2 top drawers.



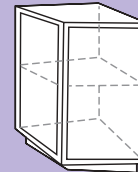
PERIOD OPEN SHELF BASE (PCOSB)

Width: 24, 30



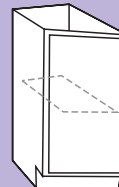
PERIOD BAR END (PCBE)

Width: 24
Depth: 12



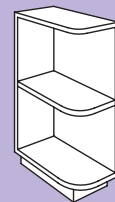
BASE END (BEC)

Width: 24



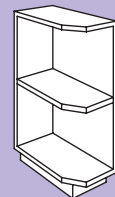
BASE TRANSITION ANGLE (BAC_FH)

Width: 12



BAR END SHELVES (BE, BED)

BE
Width: 12

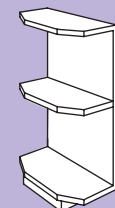


BED
Width: 12



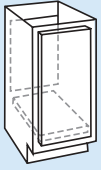
BAR ROUND SHELVES (BR, PBED)

BR
Width: 24
Depth: 12



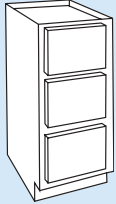
PBED
Width: 24
Depth: 12

HOME OFFICE CABINETS



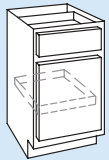
COMPUTER PROCESSING UNIT BASE (CPUB)

Width: 15
Depth: 21
Height: 28 1/2



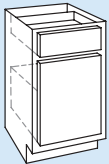
THREE DRAWER FILE CABINET (TDFC)

Width: 18
Depth: 21
Height: 46 1/2



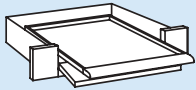
DESK PEDESTAL (DP)

Width: 15, 18, 21
Depth: 21
Height: 28 1/2



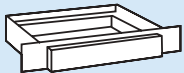
DRAWER DESK PEDESTAL (DDP)

Width: 18
Depth: 21
Height: 28 1/2
Pendaflex hanging folder frames included.



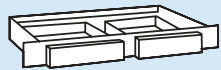
KEYBOARD DRAWER (KBD)

Width: 36
Depth: 21
Height: 5 1/8



DESK DRAWER ASSEMBLIES (DA)

Width: 30, 36
Depth: 18, 21
Height: 5
Width: 42
Depth: 18, 21
Height: 5

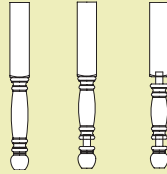


Islands

Integrated & Freestanding

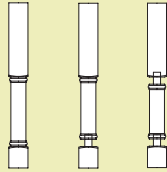
From functional to fine furniture, fully assembled island ends are designed for living. Select from an assortment of styles. Select the wood specie, finish, desired number of shelves, drawer or no drawer, islands with butcher block tops, and choose one of three decorative leg styles.

ISLANDS



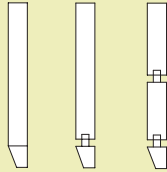
TRADITIONAL STYLE LEG A

LEGA
LEGA1S
LEGA2S



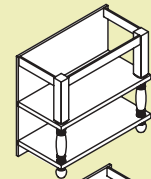
TRADITIONAL STYLE LEG B

LEGB
LEGB1S
LEGB2S



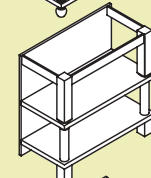
TRADITIONAL STYLE LEG C

LEGC
LEGC1S
LEGC2S



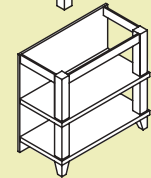
ISLAND BASE END (IBE_A2S)

Width: 24, 36, 48
Depth: 18



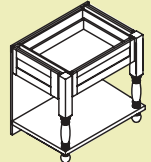
ISLAND BASE END (IBE_B2S)

Width: 24, 36, 48
Depth: 18



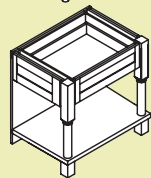
ISLAND BASE END (IBE_C2S)

Width: 24, 36, 48
Depth: 18



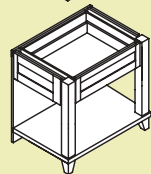
ISLAND BASE DRAWER END (IBED_A1S)

Width: 24, 36, 48
Depth: 24



ISLAND BASE DRAWER END (IBED_B1S)

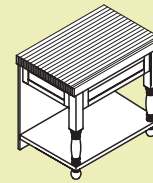
Width: 24, 36, 48
Depth: 24



ISLAND BASE DRAWER END (IBED_C1S)

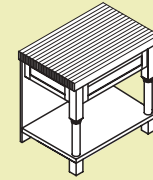
Width: 24, 36, 48
Depth: 24
24" and 36" wide units: 1 drawer
48" wide units: 2 drawers

ISLANDS



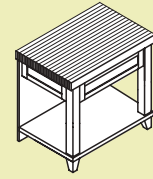
ISLAND BASE DRAWER END (IBEDBB_A1S)

Width: 25 1/2, 37 1/2, 49 1/2
Depth: 24 3/4
Height: 36
3" thick solid butcher block top.



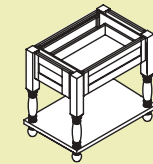
ISLAND BASE DRAWER END (IBEDBB_B1S)

Width: 25 1/2, 37 1/2, 49 1/2
Depth: 24 3/4
Height: 36
3" thick solid butcher block top.



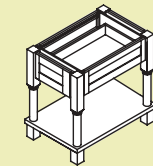
ISLAND BASE DRAWER END (IBEDBB_C1S)

Width: 25 1/2, 37 1/2, 49 1/2
Depth: 24 3/4
Height: 36
3" thick solid butcher block top.
24" and 36" wide units: 1 drawer
48" wide units: 2 drawers



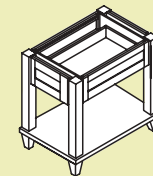
ISLAND BASE DRAWER (IBD_A1S)

Width: 24, 36, 48
Depth: 24



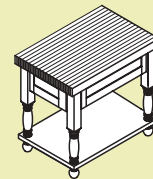
ISLAND BASE DRAWER (IBD_B1S)

Width: 24, 36, 48
Depth: 24



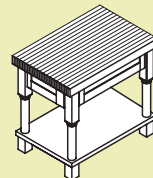
ISLAND BASE DRAWER (IBD_C1S)

Width: 24, 36, 48
Depth: 24
24" and 36" wide units: 1 drawer
48" wide units: 2 drawers



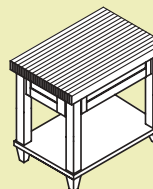
ISLAND BASE DRAWER (IBDDBB_A1S)

Width: 25 1/2, 37 1/2, 49 1/2
Depth: 24 3/4
Height: 36
3" thick solid butcher block top.



ISLAND BASE DRAWER (IBDDBB_B1S)

Width: 25 1/2, 37 1/2, 49 1/2
Depth: 24 3/4
Height: 36
3" thick solid butcher block top.



ISLAND BASE DRAWER (IBDDBB_C1S)

Width: 25 1/2, 37 1/2, 49 1/2
Depth: 24 3/4
Height: 36
3" thick solid butcher block top.
24" and 36" wide units: 1 drawer
48" wide units: 2 drawers

Tall Cabinets

Cabinet Nomenclature

U2484B

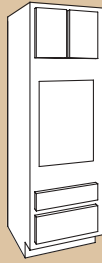
Cabinet Type Cabinet Width Cabinet Height Butt doors, no center stile

Note:

- For single door cabinets, specify right or left hinge.
- Sizes shown in inches.

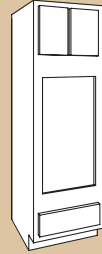
Tall cabinets are 12" or 24" deep (excluding doors) except where noted.

OVEN CABINETS



SINGLE OVEN (OC)

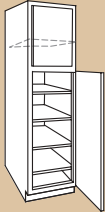
Width: 27, 30, 33
Height: 84, 90, 96
Depth: 24



DOUBLE OVEN (OCD)

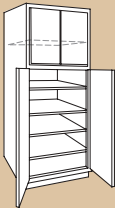
Width: 27B, 30B, 33B
Height: 84, 90, 96
Depth: 24

UTILITY CABINETS



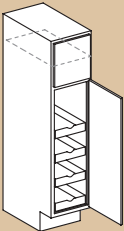
UTILITY (U)

Width: 12, 15, 18
Height: 84, 90, 96
Depth: 12, 24



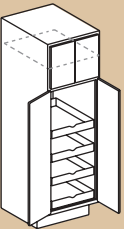
Width: 24B, 30B, 36B
Height: 84, 90, 96
Depth: 12, 24

PANTRY CABINETS

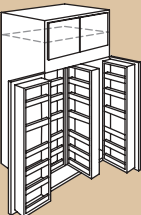


PANTRY WITH TRAYS (PT)

Width: 15, 18
Height: 84, 90, 96
Depth: 24

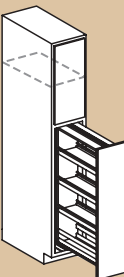


Width: 24B, 30B
Height: 84, 90, 96
Depth: 24



MULTI-STORAGE PANTRY (MSP)

Width: 36B
Height: 84, 90, 96
Depth: 24



TALL PANTRY PULL-OUT (TPP)

Width: 9, 12, 15
Height: 84, 90, 96
Depth: 24

Vanity Cabinets

Cabinet Nomenclature

Full-height door Butt doors, no center stile

VSB2421FHTB

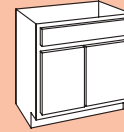
Cabinet Type Cabinet Width Cabinet Depth Designates 34 1/2" high xT Vanities

Note:

- For single door cabinets, specify right or left hinge.
- Sizes shown in inches.

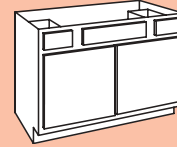
Vanity cabinets are 18" or 21" deep (excluding doors) except where noted.

VANITY BASE CABINETS



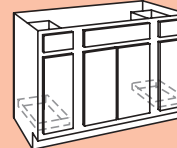
VANITY SINK BASE WITH FRONT

(VSB_B, _TB)
Width: 24, 27, 30, 33, 36
Depth: 18, 21
Height: 32, 34 1/2

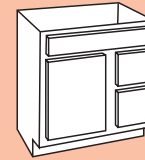


COMBINATION VANITY BASE

(CVC_B, _TB)
Width: 36
Depth: 21
Height: 32, 34 1/2

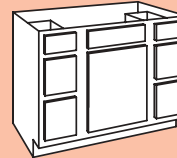


(CVC_, _T)
Width: 42
Depth: 21
Height: 32, 34 1/2

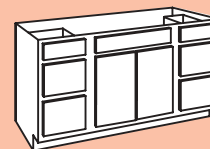


COMBINATION VANITY DRAWER BASE

(CVDB_, _T)
Width: 24, 30, 36
Depth: 18, 21
Height: 32, 34 1/2



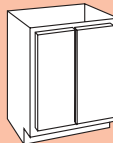
(CVDB_, _T)
Width: 42, 45, 48, 57
Depth: 21
Height: 32, 34 1/2



VANITY SINK BASE WITH FULL-HEIGHT DOOR

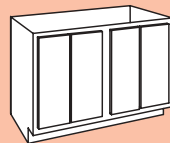
(VSB_FH, _FHT)
Width: 18
Depth: 16
Height: 32, 34 1/2

Width: 18, 21
Depth: 18, 21
Height: 32, 34 1/2

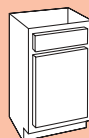


(VSB_FHB, _FHTB)
Width: 24, 27, 30, 33, 36
Depth: 18, 21
Height: 32, 34 1/2

(VSB_FH, _FHT)
Width: 42
Depth: 21
Height: 32, 34 1/2

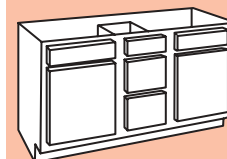


(VSB_FHB, _FHTB)
Width: 48, 60
Depth: 21
Height: 32, 34 1/2



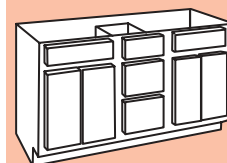
VANITY SINK BASE WITH FRONT

(VSB_, _T)
Width: 21
Depth: 18, 21
Height: 32, 34 1/2

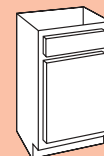


COMBINATION DOUBLE VANITY DRAWER BASE

(CDVDB_, _T)
Width: 57
Depth: 21
Height: 32, 34 1/2



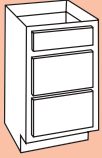
(CDVDB_B, _TB)
Width: 60
Depth: 21
Height: 32, 34 1/2



VANITY BASE (VB_, _T)

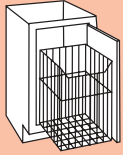
Width: 12, 15, 18, 21
Depth: 21
Height: 32, 34 1/2

VANITY BASE CABINETS



VANITY DRAWER BASE (VDB_, _T)

Width: 12, 15, 18, 21
Depth: 21
Height: 32, 34 1/2



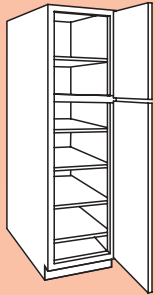
VANITY HAMPER BASE (VH_)

Width: 18
Depth: 21
Height: 32

BASE (VBH_T)

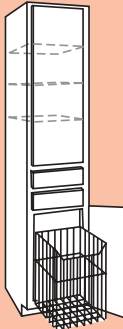
Width: 18
Depth: 21
Height: 34 1/2

VANITY TALL CABINETS



TALL LINEN (TLC)

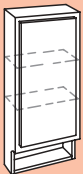
Width: 18
Depth: 18, 21
Height: 84



TALL LINEN HAMPER (TLHC)

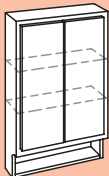
Width: 18
Depth: 21
Height: 84

VANITY WALL CABINETS



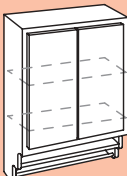
VANITY WALL (WC)

Width: 15
Depth: 6
Height: 36



VANITY WALL (WC_B)

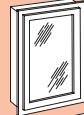
Width: 24
Depth: 6
Height: 36



VANITY WALL (WLC_B)

Width: 24
Depth: 8
Height: 33 1/2

VANITY MEDICINE CABINETS



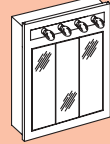
SINGLE DOOR (MC)

Width: 15
Depth: 4 3/4
Height: 24



TRI-VIEW (TVMC)

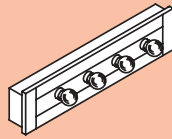
Width: 24, 30, 36, 48
Depth: 4 3/4
Height: 30



LIGHTED TRI-VIEW Brass (BLTV) Chrome (CLTV)

Width: 24 (3 lights)
30, 36 (4 lights)
48 (5 lights)
Depth: 4 3/4
Height: 34 1/2
Light bulbs not included.

VANITY LIGHT BARS

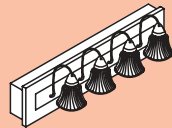


CONTEMPORARY LIGHT BAR

Brass (BCLB) Chrome (CCLB)

Width: 24 (3 lights)
30, 36 (4 lights)
48 (5 lights)
Depth: 4 3/4
Height: 6

Light bulbs not included.



TRADITIONAL LIGHT BAR

Brass (BTLB) Chrome (CTLB)

Width: 24 (3 lights)
30, 36 (4 lights)
48 (5 lights)
Depth: 4 3/4
Height: 6

Clear fluted glass shade included.
Light bulbs not included.

Furniture Components

Available in square door styles only.
Cabinet nomenclature

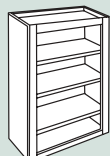
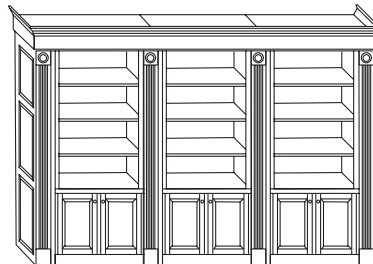


Note:

- Sizes shown in inches.

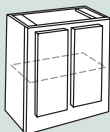
Standard Library System cabinet depth is 12".

LIBRARY SYSTEMS



LIBRARY BOOKCASE TOP (LBCT)

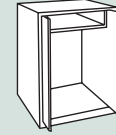
Width: 30, 36, 39, 42, 45, 48
Height: 61
Height: 73, 81



LIBRARY BOOKCASE BOTTOM (LBCB)

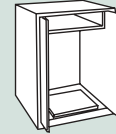
Width: 30, 36, 39, 42, 45, 48
Height: 28 1/2

POCKET DOOR CABINETS



POCKET DOOR (PDC)

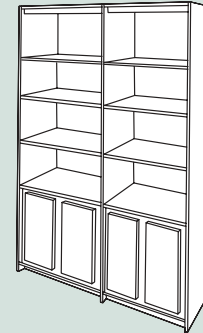
Width: 36, 42, 48
Depth: 24
Height: 42



POCKET DOOR (PDCTV)

Width: 36, 42, 48
Depth: 24
Height: 42

WALL SYSTEMS



WALL SYSTEM

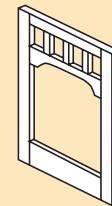
Decor Creations™
Accents for your home

Our Decor Creations™ accents are a collection of decorative embellishments that surround your cabinets with the look of fine furniture.

Note:

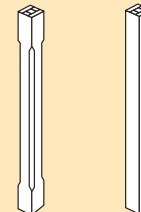
- Sizes shown in inches.

DECOR CREATIONS™



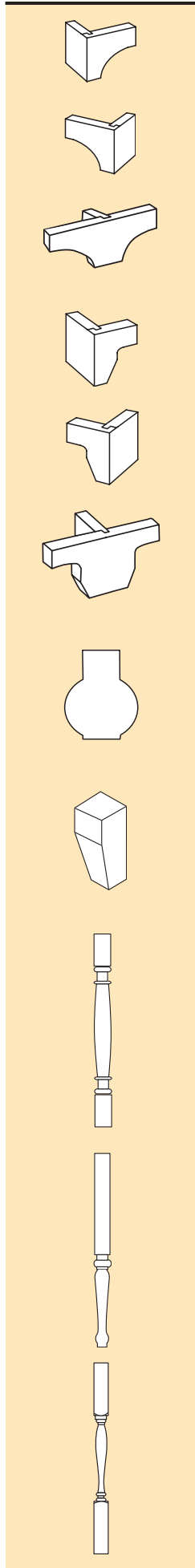
ARCHED TRANSOM FRAME PANEL (ATFP)

Width: 21 (3 lites in top rail)
24 (4 lites in top rail)
30 (5 lites in top rail)
Thickness: 3/4
Height: 34 1/2



BASE AND TALL POSTS

Beveled Corner Post (BPB, TPB)
Thickness: 3
Height: 34 1/2, 48
Square Corner Post (BPS, TPS)
Thickness: 3
Height: 34 1/2, 48



ARCHED FEET (ARCFT)

ARCFT-L
Width: 6 1/2
Depth: 3
Height: 4 1/2

ARCFT-R
Width: 6 1/2
Depth: 3
Height: 4 1/2

ARCFT-C
Width: 13 1/2
Depth: 3 3/4
Height: 4 1/2

ANGLED FEET (ANGFT)

ANGFT-L
Width: 4 1/2
Depth: 3 3/4
Height: 4 1/2

ANGFT-R
Width: 4 1/2
Depth: 3 3/4
Height: 4 1/2

ANGFT-C
Width: 9 1/2
Depth: 3 3/4
Height: 4 1/2

BUN FOOT (BUNFT)

Diameter: 2 1/2
Height: 6

TAPERED FOOT (TPRFT)

Thickness: 2 1/2
Height: 6

REVERSIBLE TURNED FURNITURE LEG (RVTFLG)

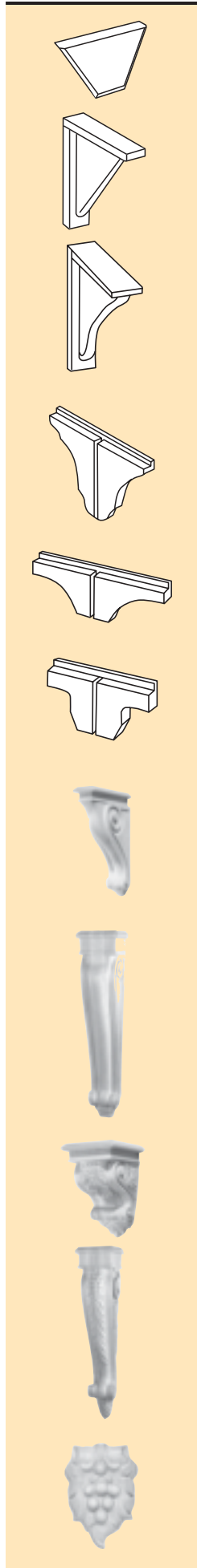
Thickness: 3
Height: 34 1/2

TURNED FURNITURE LEG (TFLEG)

Thickness: 3
Height: 34 1/2

DECORATIVE SPINDLE (DS)

Thickness: 2
Height: 33



KEYSTONE APPLIQUE (KAS)

Width: 5 7/8
Thickness: 3/4
Height: 2 7/8

CONTEMPORARY COUNTER TOP SUPPORT (CTS)

Width: 2 1/2
Depth: 9
Height: 12 1/2

DECORATIVE TOP SUPPORT (DTS)

Width: 2 3/4
Depth: 11
Height: 11

CORBEL-A

Height: 4 7/8

ARCHED CORBEL (CORBEL-ARC)

Height: 3 7/8

ANGLED CORBEL (CORBEL-ANG)

Height: 3 7/8

SCROLLED CORBEL (CORBEL-SC_)

CORBEL-SC13
Width: 2 3/8
Depth: 9 3/16
Height: 13

Carved solid wood.

CORBEL-SC24
Width: 5 1/4
Depth: 4 3/8
Height: 24

Carved solid wood.

GRAPE CORBEL (CORBEL-GR_)

CORBEL-GR9
Width: 5 3/4
Depth: 6 1/16
Height: 8 7/8

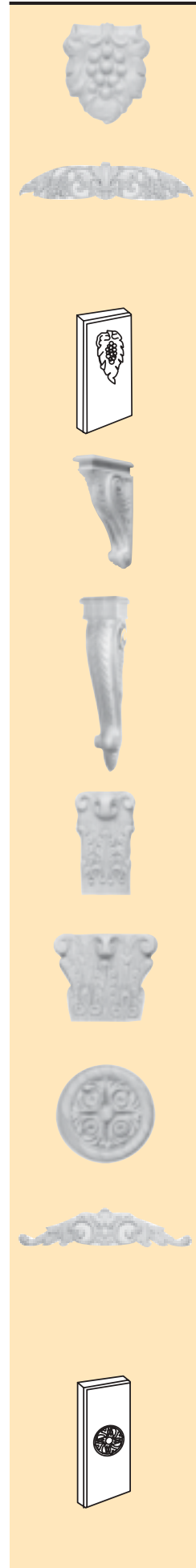
Carved solid wood.

CORBEL-GR24
Width: 5 1/4
Depth: 4 3/8
Height: 24

Carved solid wood.

GRAPE FILLER ONLAY APPLIQUE (GRFO_)

GRFOS
Width: 2 5/16
Height: 3 1/2
Thickness: 5/8



GRAPE FILLER ONLAY APPLIQUE (GRFO_)

GRFOL
Width: 3 3/16
Height: 3 1/2
Thickness: 5/8

GRAPE VALANCE APPLIQUE (GRVA)

Width: 20
Height: 4 1/2
Thickness: 5/8

Carved solid wood.

GRAPE APPLIQUE BLOCK (GRBL_)

Width: 2 13/16, 5 13/16
Height: 6
Thickness: 1

ACANTHUS CORBEL (CORBEL-AC_)

CORBEL-AC13
Width: 2 5/8
Depth: 9 3/16
Height: 13

Carved solid wood.

CORBEL-AC24
Width: 5 1/4
Depth: 4 3/8
Height: 24

Carved solid wood.

ACANTHUS CAPITAL FILLER ONLAY (ACCFO_)

ACCFO3
Width: 2 7/8
Height: 5
Thickness: 1 9/16

Carved solid wood.

ACCFO6
Width: 5 1/2
Height: 4 1/2
Thickness: 1 9/16

Carved solid wood.

ACANTHUS ROUND FILLER ONLAY APPLIQUE (ACRFO)

Height: 2 1/8
Thickness: 3/8

Carved solid wood.

ACANTHUS VALANCE APPLIQUE (ACVA)

Width: 20
Height: 4 1/2
Thickness: 5/8

Carved solid wood.

ACANTHUS APPLIQUE BLOCK (ACRBL_)

Width: 2 13/16
Height: 6
Thickness: 1

Carved solid wood.



BASKET WEAVE CORBEL (CORBEL-WV_)

CORBEL-WV6
Width: 2 7/8
Depth: 2 11/16
Height: 6

Carved solid wood.

CORBEL-WV9
Width: 5 7/8
Depth: 4
Height: 9

Carved solid wood.

CORBEL-WV13

Width: 2 7/8
Depth: 3 1/2
Height: 13

Carved solid wood.

CORBEL-WV24
Width: 5 1/4
Depth: 4 1/2
Height: 24

Carved solid wood.

BASKET WEAVE BLOCK ONLY (WVBO_)

WVBOS
Width: 2 7/8
Height: 2 7/8

WVBOL
Width: 5 7/8
Height: 5 7/8

BASKET WEAVE VALANCE APPLIQUE (WVVA)

Width: 20
Height: 4 1/2

Carved solid wood.

BASKET WEAVE MOLDING

M42-8
Width: 96
Height: 2

Carved solid wood.

LEAVES CORBEL (CORBEL-LV_)

CORBEL-LV6
Width: 2 7/8
Depth: 3
Height: 6

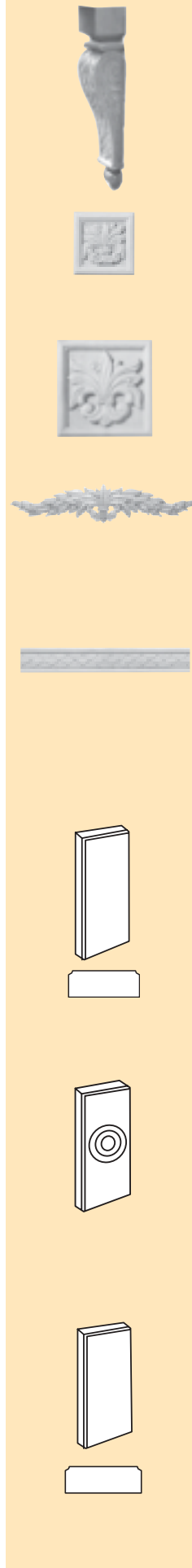
Carved solid wood.

CORBEL-LV9
Width: 5 7/8
Depth: 4
Height: 9

Carved solid wood.

CORBEL-LV13
Width: 2 7/8
Depth: 3 7/16
Height: 13

Carved solid wood.



LEAVES CORBEL (CORBEL-LV_)

CORBEL-LV24
Width: 5 1/4
Depth: 4 1/2
Height: 24

Carved solid wood.

LEAVES BLOCK ONLY (LVBO_)

LVBOS
Width: 2 7/8
Height: 2 7/8

Carved solid wood.

LVBOL
Width: 5 7/8
Height: 5 7/8

Carved solid wood.

LEAVES VALANCE APPLIQUE (LVVA)

Width: 20
Height: 4 1/2

Carved solid wood.

LEAVES MOLDING

M43-8
Width: 96
Height: 2

Carved solid wood.

ONLY APPLIQUE BLOCK (OBL_)

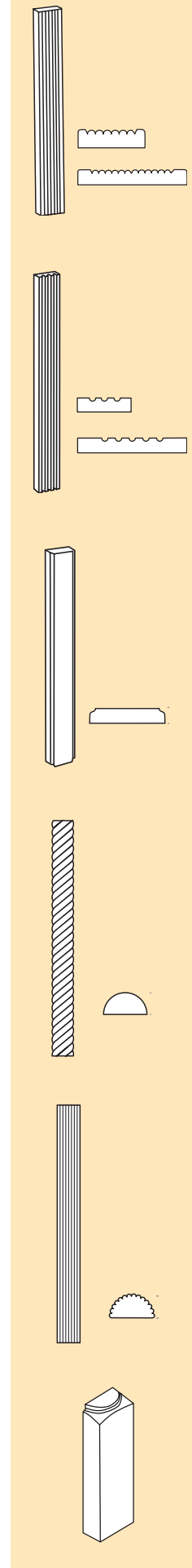
Width: 2 13/16, 5 13/16
Height: 6
Thickness: 1

ROSETTE BLOCK (ORBL_)

Width: 2 13/16, 5 13/16
Height: 6
Thickness: 1

PLINTH BLOCK (OPBL_)

Width: 2 13/16, 5 13/16
Height: 7, 9
Thickness: 1



BEADED BOARD (BB_)

Width: 2 1/2, 5 1/2
Height: 84, 96
Thickness: 3/4

FLUTED COLUMN BOARD (FCB_)

Width: 2 1/2, 5 1/2
Height: 84, 96
Thickness: 3/4

TRANSITIONAL COLUMN BOARD (TCB_)

Width: 2 1/2, 5 1/2
Height: 84, 96
Thickness: 3/4

SPLIT POST MOLDING ROPE (SPMRP)

Width: 1 1/2
Height: 96

SPLIT POST MOLDING BEADED (SPMBE)

Width: 1 1/2
Height: 96

SPLIT POST MOLDING CAPITAL (SPCAPL)

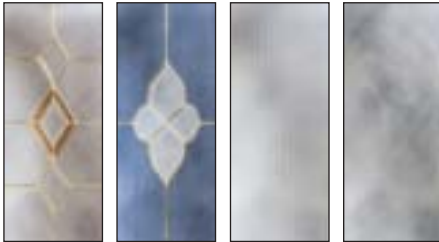
Width: 2 1/2
Depth: 1 1/4
Height: 7 7/8

Door Frame Inserts

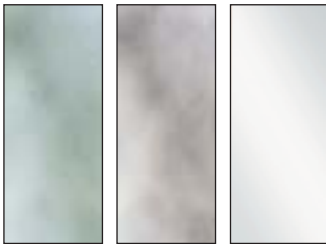


Decorative glass inserts and Lumicor panels for door frames and mullion doors. Ask your designer for details.

GLASS DOOR FRAME INSERTS



DIAMONDS MILAN REEDED SMOKED



FERN SEEDED CLEAR

LUMICOR DOOR FRAME INSERTS

All panels are 1/8" thick and reversible, crafted with one gloss side and one matte side.



SILVER MESH BRONZE MESH OYSTER LINEN OLIVE MOIRE



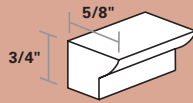
GREEN STROBE TOFFEE LEAVES RICE PAPER PAPER LEAF



ALUMASTEEL

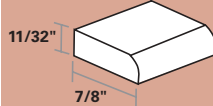
Moldings

MOLDINGS



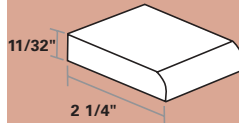
TRIM

M1-7



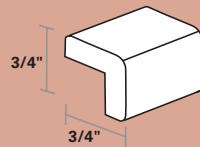
SMALL SCRIBE

M2-8



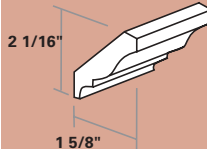
LARGE SCRIBE

M3-8



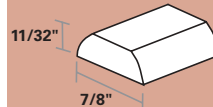
SMALL OUTSIDE CORNER

M4-7



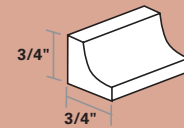
CROWN

M5-8



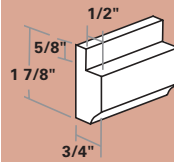
BATTEN

M6-7



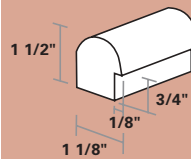
INSIDE CORNER

M7-7



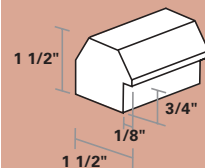
LIGHT SHIELD

M8LS-7



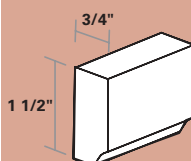
RADIUS CROWN LIGHT SHIELD

M9-7



CONTEMPORARY CROWN LIGHT SHIELD

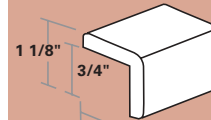
M10-8



COUNTER EDGE LIGHT SHIELD

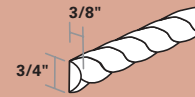
M11-8

MOLDINGS



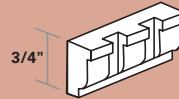
LARGE OUTSIDE CORNER

M12-8



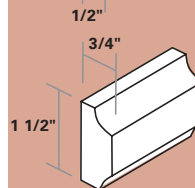
ROPE

M14-8



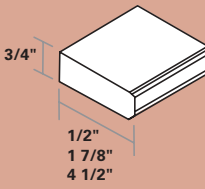
DENTIL

M15-8



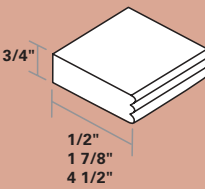
COUNTER EDGE

M17-8



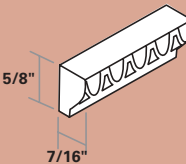
SINGLE BEAD

M19-8 (1/2")
M20-8 (1 7/8")
M21-8 (4 1/2")



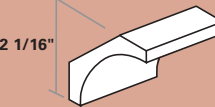
TRIPLE BEAD

M22-8 (1/2")
M23-8 (1 7/8")
M24-8 (4 1/2")



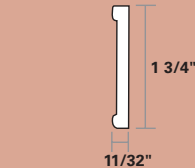
EGG & DART

M30-8



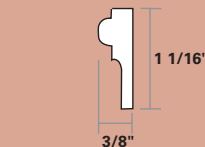
COVE CROWN

M31-8



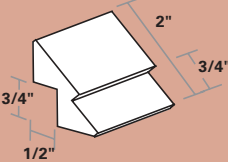
VINE

M32-8



WAVE

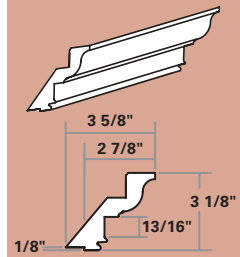
M33-8



DIAGONAL CORNER

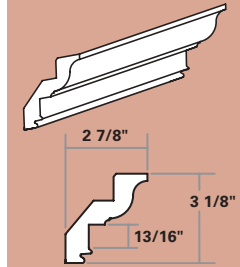
M34-8

MOLDINGS



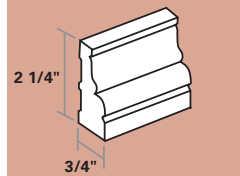
WIDE CROWN

M35-8



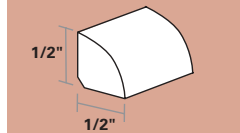
WIDE CROWN

M36-8



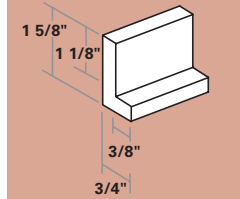
WINDOW / DOOR CASING

M38-8



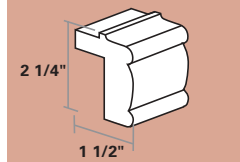
SHOE

M39-8



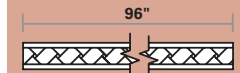
INLAID FRIEZE

M40-8



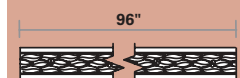
DECORATIVE LIGHT SHIELD

M41-8



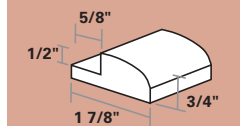
BASKET WEAVE

M42-8



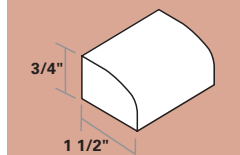
LEAVES

M43-8



LIGHT SHIELD

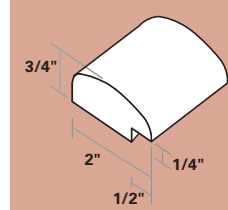
M44LS-7



COUNTER EDGE / LIGHT SHIELD

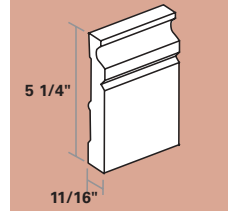
M45-8

MOLDINGS



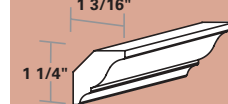
MIRROR

M46-6



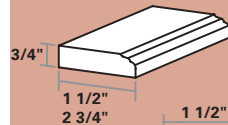
BASEBOARD

M47-8



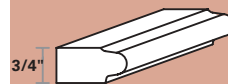
SMALL CROWN

M48-8



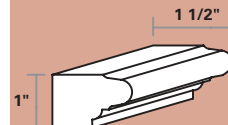
LEDGE

M49-8 (1 1/2")
M50-8 (3 3/4")



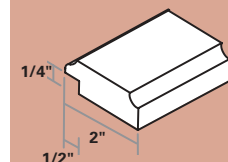
WOOD EDGE

M51-8



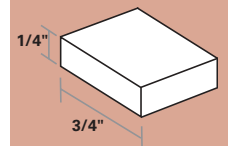
WOOD EDGE

M52-8



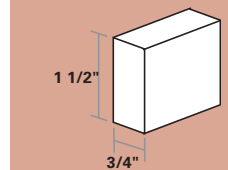
MIRROR

MM-6



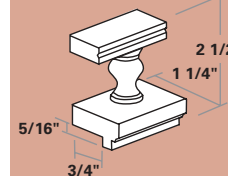
REVEAL STRIP

RS-4



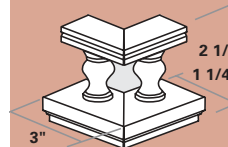
SPACER STRIP

SS-8



SPINDLE RAIL

SR-8



CORNER SPINDLE RAIL

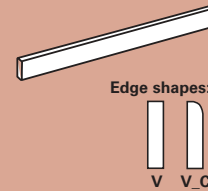
CSR-3

Accessories

Note:

- Sizes shown in inches.
- All valances are 3/4" thick.

VALANCES



STANDARD VALANCE (V, V_TF, V_C)

Wood (V)
Width: 48, 72, 96
Height: 4, 6, 9

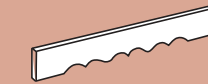
Thermo Foil (V_TF)
Width: 48, 72, 96
Height: 4, 6, 9

Contours (V_C)
Width: 48, 72, 96
Height: 4, 6, 9

VALANCE BASE BOARD (VBB, VBB_C)

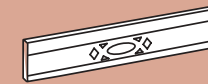
VBB
Width: 48, 96
Height: 4 5/8

Contours (VBB_C)
Width: 48, 96
Height: 4 5/8



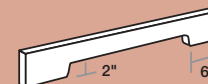
SCALLOPED VALANCE (VS)

Width: 52, 72, 96
Height: 5



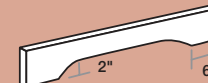
PERIOD VALANCE (PV)

Width: 12, 18, 24, 30, 36, 48, 84
Height: 5



ANGLED VALANCE (ANG)

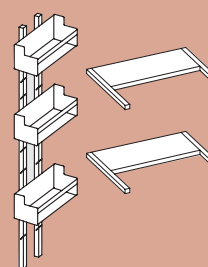
Width: 18, 24, 30, 36, 48, 72, 96
Height: 4



ARCHED VALANCE (ARC)

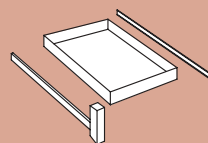
Width: 18, 24, 30, 36, 48, 72, 96
Height: 4

KITS AND COMPONENTS



SPICE RACK WALL KIT (SRWK)

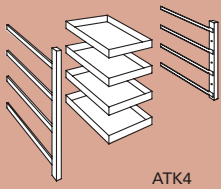
Width: 15, 18
Height: 30, 36, 42



BASETRAY KIT (TK)

Width: 12, 15, 18, 21, 24, 27B, 30, 33, 33B, 36B, 39
Depth: 18, 21, 24

KITS AND COMPONENTS



ADJUSTABLE TRAY KIT (ATK)

2 roll-out trays (ATK2)
Width: 12, 15, 18, 21, 24, 27B, 30B, 33B, 36B
Depth: 18, 21, 24

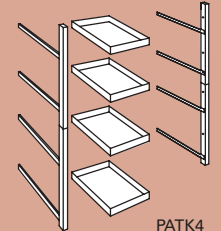
3 roll-out trays (ATK3)
Width: 12, 15, 18, 21, 24, 27B, 30B, 33B, 36B
Depth: 18, 21, 24

4 roll-out trays (ATK4)
Width: 12, 15, 18, 21, 24, 27B, 30B, 33, 33B, 39
Depth: 18, 21, 24

6 roll-out trays (ATK6)
Width: 15, 18, 21, 24, 33, 39
Depth: 18, 21, 24

8 roll-out trays (ATK8)
Width: 15, 18, 21, 24, 33, 39
Depth: 18, 21, 24

4 roll-out trays (PATK4)
Width: 15, 18, 24, 30
Depth: 18, 21, 24
 For use in pantry cabinets only.

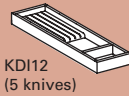


WOOD CUTLERY TRAY (CT)

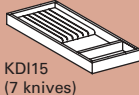
Fits cabinet sizes:
Width: 12, 15, 18, 21, 24, 27, 30, 36, 42, 48
Depth: 19 3/8
Height: 2 1/2



KITS AND COMPONENTS



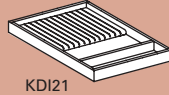
KDI12
 (5 knives)



KDI15
 (7 knives)



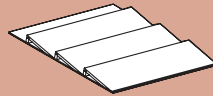
KDI18
 (11 knives)



KDI21
 (13 knives)

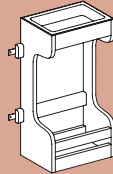
KNIFE DRAWER INSERT (KDI)

Fits cabinet sizes:
Width: 12, 15, 18, 21, 24, 27, 30, 36, 42, 48
Depth: 19 3/8
Height: 2 1/2



SPICE DRAWER INSERT (SBI)

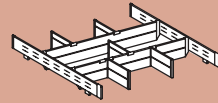
Width: 12, 15, 18, 21, 24
Depth: 19 3/8
Thickness: 1 1/2



SINK BASE DOOR ORGANIZER (SBDO)

Width: 15, 18, 21, 30, 36, 42

Holds cleaning supplies conveniently under the sink. Kit includes all installation hardware.



DEEP DRAWER ORGANIZER (DDO)

Width: :27, 30, 33, 36

Used to organize and store containers and divide spaces in a base cabinet.

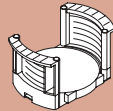
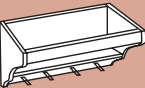


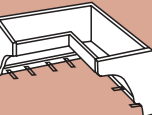
PLATE STACKER (DDOS)

Stores plates and bowls in deep drawers.

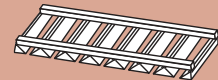


CUP SHELVES (CS, CCS)

CC
Width: 18, 21, 24, 27, 30, 33
Shelf depth: 3 3/8
Height: 10 5/8



CCS
Width: 24
Shelf depth: 3 3/8
Height: 10 5/8



STEM GLASS RACK (SGR)

Width: 30
Depth: 12



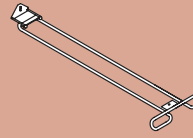
RATTAN BASKET BASE KIT (RB_K)

KITS AND COMPONENTS



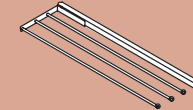
RATTAN BASKET (RB)

Width: 4 1/2
Depth: 11 1/4, 21 1/4
Height: 4 1/2



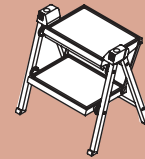
STEM GLASS RACK

WSGH-B (Brass)
 WSGH-C (Chrome)



TOWEL BAR (STB)

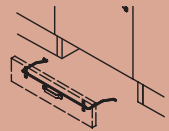
Width: 5 7/16
Depth: 17 11/16



FOLDING STEP STOOL (FSS)

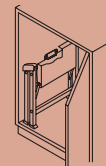
Dimensions folded:
Width: 16
Length: 18 3/8
Height: 4

Steel construction with plastic feet.



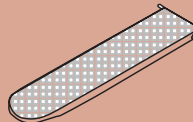
TOE KICK BRACKET (FSS-TKB)

Used to slide and store folding step stool under cabinet.



HANGING BRACKET (FSS-HGB)

Steel construction. Screws into the cabinet end panel or on a pantry wall to hang step stool.



IRONING BOARD SLEEVE ATTACHMENT (BIBSA)



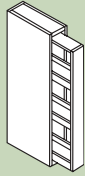
JOHN BOOS MYSTERY OIL (BBMO)

Use on any butcher block cutting surface.

Fillers & Panels

Note:
• Sizes shown in inches.

FILLERS



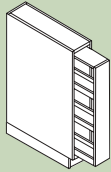
WALL FILLER PULL-OUT (PWF)

Width: 3, 6
Depth: 11 1/4
Height: 30, 36, 42



STANDARD WALL FILLER (WF)

Width: 3, 6
Depth: 12
Height: 30, 36, 42



BASE FILLER PULL-OUT (PBF)

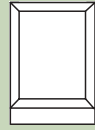
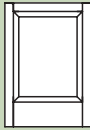
Width: 3 7/16, 6 7/16
Depth: 23 1/4
Height: 34 1/2



COLUMN BOX (CBX)

Width: 3, 6
Depth: 15, 24, 27
Height: 12, 15, 18, 21, 24, 27, 30, 32, 34, 36, 42, 48, 54, 60, 84, 90, 96

DELUXE END PANELS

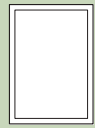
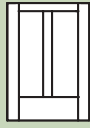


Mitered door style base end panel design

DELUXE BASE END PANEL (DLXBE)

CONTOURS (DLXBE_C)

Width: 12, 15, 18, 21, 24
Height: 28 1/2, 32, 34 1/2

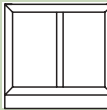


Hearthside door style base end panel design

Contours door style base end panel design



Metropolitan door style base end panel design

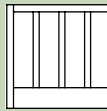


Mitered door style base end panel design

DELUXE BASE END PANEL (DLXBE)

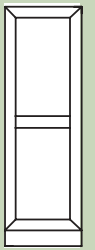
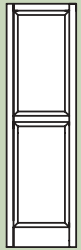
CONTOURS (DLXBE_C)

Width: 27, 30, 33, 36, 39, 42
Height: 34 1/2



Contours door style base end panel design

Hearthside door style base end panel design



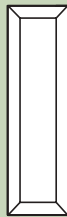
Mitered door style tall end panel design

DELUXE TALL END PANEL (DLXTE)

CONTOURS (DLXBE_C)

Width: 12, 24
Height: 84, 90, 96

DELUXE END PANELS



Mitered door style wall end panel design

DELUXE WALL END PANEL (DLXWE)

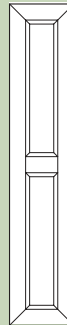
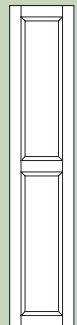
CONTOURS (DLXWE_C)

Width: 12, 15, 18, 21
Height: 12, 15, 18, 24, 27, 30, 36, 42, 48, 54



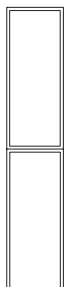
Contours door style wall end panel design

Metropolitan door style wall end panel design



Mitered door style deluxe wall end panel design

Width: 12, 15, 18, 21
Height: 60

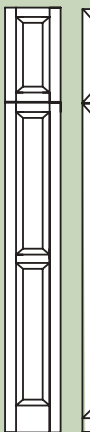


Contours door style deluxe wall end panel design

Metropolitan door style deluxe wall end panel design



Contours door style tall end panel design



Mitered door style tall end panel design

Width: 12
Height: 108

Appliance Panels

Panel sizes, make and model number must be specified. Ask your designer for details and availability.

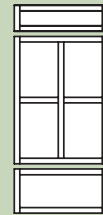


FLAT VENEER PANELS

REFRIGERATOR



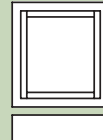
DISHWASHER



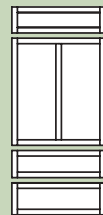
FRAMED DOORS

1/4" thick plywood

REFRIGERATOR



DISHWASHER



FRAMED OVERLAY DOORS

REFRIGERATOR



REFRIGERATOR or DISHWASHER DRAWERS



3/4" THICK PANELS

REFRIGERATOR



DISHWASHER

Modifications

We can modify cabinets to meet special needs, add functionality, and help you create a kitchen that is tailor made just for you. Perhaps you want to increase the depth of a cabinet for more storage or invert the front frame on a sink base cabinet to gain practical drawer space. You can select from a wide list of commonly requested modifications. Ask your designer for details.



Arch Bottom Rail

The cabinet front frame extends down to the floor and is crafted into a decorative arch valance.



Flush Toe Kick

The cabinet front frame extends to the floor with a flush toe kick.



Change Depth

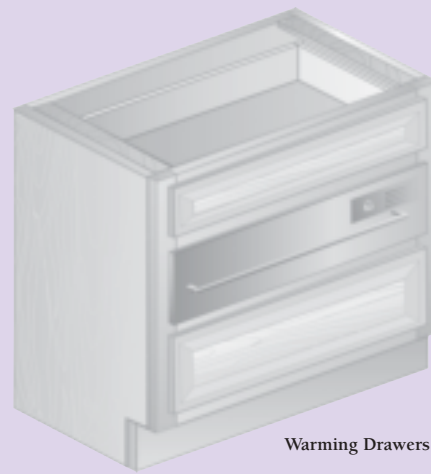
Reduce or increase the depth of a wall, base, tall or vanity cabinet.

Custom Quote Program

If there is still a desire to go beyond the scope of our wide range of modifications, take a look at our customizing capabilities. Yorktowne will work with your designer to create custom cabinetry exclusively for you – making your kitchen or work area as efficient as possible.



Apron Range Tops



Warming Drawers

Apron range tops and warming drawers of any size can be accommodated through our custom modification capabilities.

Our finest collection, characterized by exquisite styling, meticulous detail & uncompromising quality.



ROYALLE



KINGFIELD



CELEBRATION



HALLMARK



BELMONTE



STOCKTON



HARMONY



CONTOURS



CATALINA SQUARE



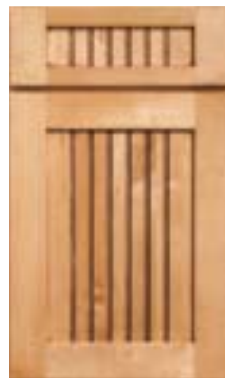
CATALINA ARCH



ASBURY ARCH



ASBURY CATHEDRAL



CHARLTON



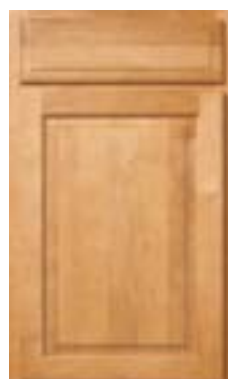
SIMPLICITY



HEARTHSTONE



BELLAIRE



AVONDALE SQUARE



AVONDALE ARCH



AVONDALE CATHEDRAL



HARBORTON

Practical styles that
combine solid value
and enduring beauty.



SERENITY



KEYSTONE



CAMBRIDGE SQUARE



CAMBRIDGE ARCH



ASBURY SQUARE



FOXRIDGE



BRIGHTON SQUARE



BRIGHTON ARCH



METROPOLITAN



GREENFIELD



GLENMONT



SNOWDEN*



MONTICELLO

Doors shown
without drawer fronts
indicate availability
in wall and tall cabinets.

*Available in vanity cabinetry only.



Stockton Maple, Roselle Finish with Ebony Glaze



Royalle Maple, Impressions Eclipse and Natural Finish with Ebony Glaze



Charlton Maple, Chiffon Finish with Mocha Glaze



Hallmark Cherry, Toffee Finish with Mocha Glaze



Contours Cherry, Butternut Finish



Serenity Maple and Cherry, Onyx and Toffee Finishes

YORKTOWNE™
CABINETRY
AN ELKAY COMPANY

A century of craftsmanship. A lifetime of quality.

YORKTOWNE, INC.
PO BOX 231
100 REDCO AVE.
RED LION, PA 17356-0231
800-777-0065

yorktownecabinetry.com

Please Note:

- Because all hardwoods have their own "personality" or special characteristics, variations in color, finish, grain pattern, and texture are to be expected. Yorktowne Cabinetry cannot be responsible for the variations within and between cabinets. These variations are naturally occurring and are considered acceptable, even desirable, because they result from the character and beauty of natural wood and/or hand-crafted finishing techniques.
- Due to chemical differences between printing inks and the pigments used in our manufacturing process, we cannot guarantee exact color reproduction of cabinet finishes in this brochure. Ultimate selection should be made from actual product samples.
- Specifications subject to change without notice or obligation to make changes in products previously produced. Changes may occur due to material availability and/or improvements in product design.
- Some of the photographs in this brochure do not reflect 2006 product specification changes due to their modest visual perception.
- Optional decorative hardware shown.
- Some cabinets shown may have been modified to meet special application or design needs. Yorktowne will build special cabinets as requested, whenever possible.



All cabinets bear the Kitchen Cabinet Manufacturer's Association certification label, which confirms compliance to the American National Standards Institute's performance guidelines for kitchen cabinetry.



Signature Collection



Premier Collection



* Available in select styles.

COPYRIGHT YORKTOWNE, INC. 2002-06
PRINTED IN THE U.S.A.
FORM #CB129 (10/06) ACN 15M